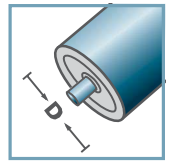
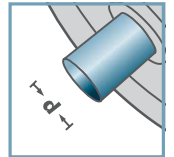


MTS-44



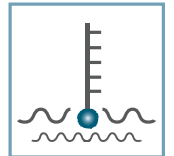
D [mm]  
80 - 108



d [mm]  
16; 17; SW14



C [daN]  
250



T [°C]  
0° - 100°



EP 2



Karton [Stck.]

50

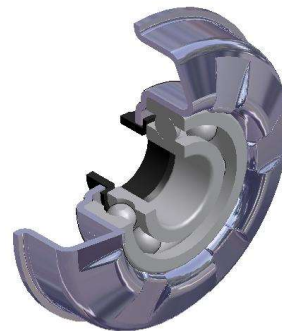
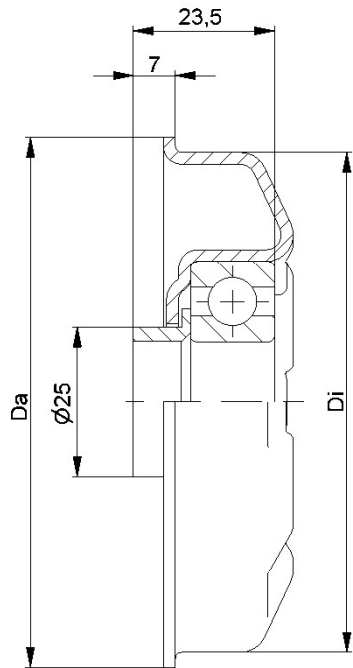
MTS-44			
Typ	Di ±0.1	Da ±0.2	Tragzahl C [daN]
MTS-80x2,0.44	76,5	79,5	250
MTS-80x3,0.44	74,5	79,5	250
MTS-89x3,0.44	83,5	88,5	250
MTS-89x3,25.44	83,0	88,5	250
MTS-108x3,25.44	102,0	107,5	250

Weitere Varianten auf Anfrage!

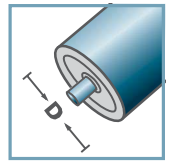
- Radkörper: Stahl, verzinkt
- Reduzierbuchse: Kunststoff
- Kugellager 6204



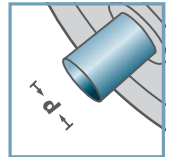
MTS



MTS-44



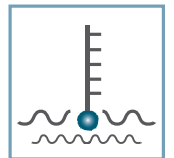
D [mm]  
80 - 108



d [mm]  
20



C [daN]  
250



T [°C]  
0° - 100°



EP 2



Karton [Stck.]

50

MTS-44			
Typ	Di ±0.1	Da ±0.2	Tragzahl C [daN]
MTS-80x2,0.44	76,5	79,5	250
MTS-80x3,0.44	74,5	79,5	250
MTS-89x3,0.44	83,5	88,5	250
MTS-89x3,25.44	83,0	88,5	250
MTS-108x3,25.44	102,0	107,5	250

Weitere Varianten auf Anfrage!

- Radkörper: Stahl, verzinkt
- Distanzbuchse: Kunststoff
- Kugellager 6204



MTS